

Product in compliance with standard NF P 93-353 of 19 December 2016 for products with platforms less than 1.5m above floor level.

2 (without stabilizers)	0,52	0,96	0,63	10,3	1,78 x 0,6 x 0,34	Max: 150
3 (without stabilizers)	0,71	1,1	0,63	12,3	1,97 x 0,83 x 0,34	
4 (without stabilizers)	0,95	1,25	0,8	14,1	2,23 x 0,83 x 0,34	
5 (with stabilizers)	1,18	1,41	1,95	17,8	2,47 x 0,6 x 0,34	

## 1. Product description

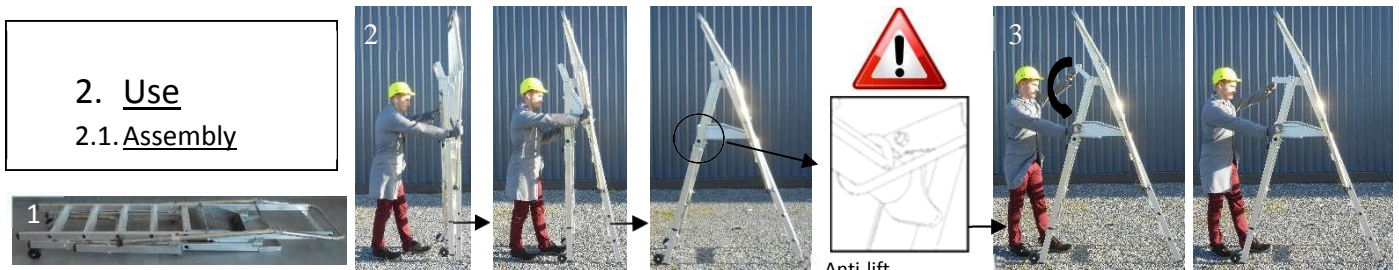
Lightweight Individual Mobile Platforms (P.I.R.L.) are used for interior finishing operations. These platforms are for use by just one operator working from the floor.

Platforms are fitted with two non-swivel rollers used for positioning and transporting them.

Platforms are fitted with two independent adjustable stabilizers, only available on the 5-step model. The stabilizers hold the unit perfectly securely, under the normal operating conditions recommended by standards.

## 2. Use

### 2.1. Assembly

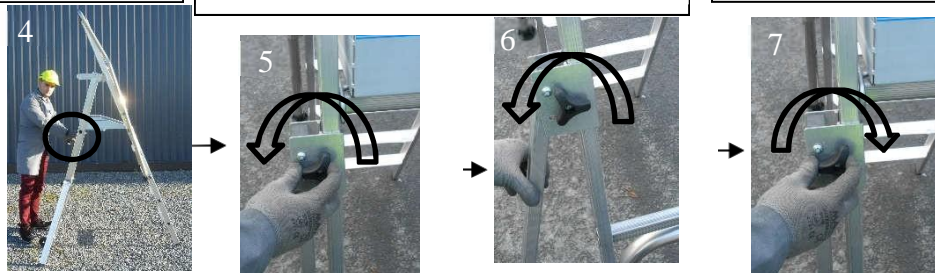


1) Fitting side-feet for 3 and 4-step models as per instructions 61029/356

2) Open the platform by lowering the floor. The platform must be in contact with the climbing section, the section with the steps.

3) unfold the brace

**Stabilizer**  
For product :  
5 Steps



**LOCK THE WHEEL**

4) Put the stabilizers in position: untighten the knurled knob (5), then slide the stabilizer downwards until it touches the floor (6). Lock the knurled knob (7) in place before using the product.

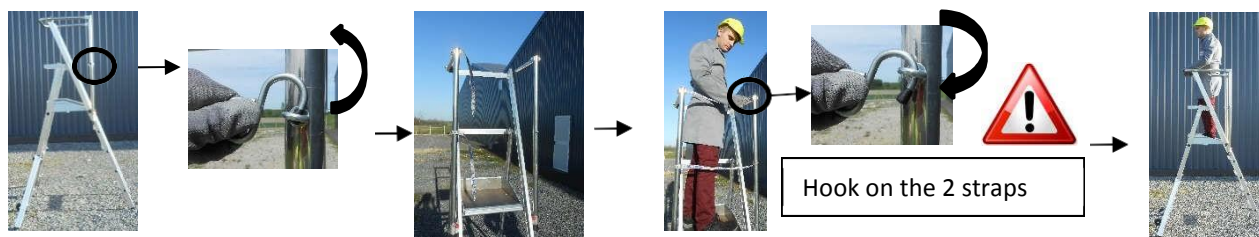


**THE PIN MUST BE LOCKED IN PLACE**

8) The guardrail is put in place by pushing the two tubes upwards.

Warning: ALWAYS check that the pins are correctly locked in position.

## 2.2. Access



Unhook the 2 straps for accessing the platform. Once on the platform, put the straps back in place by inserting the hooks into the rings.

**WARNING:** ALWAYS check that the straps are correctly in place.

## 2.3. Moving



Moving when folded up



Moving when unfolded

## 2.4. Work positions



## 2.5. Closing

Fold the unit up in reverse order to assembling it.

**WARNING:** When folding up the product, the straps must be hooked in position for preventing any possible injury.

## 3. Recommendations for use:

- + Do not use the platform without its guardrails, nor behind any door that has not been locked.
- + The platform must only be used on horizontal, non-slip surfaces.
- + All the platform's feet must be in contact with the floor.
- + On soft ground, a support plate must be placed under every foot concerned, whilst ensuring that the whole support surface is flat on the floor at the same time.
- + The platform is not designed for direct contact with elements under power, but it provides a sufficiently high level of protection for protecting users in the event of accidental contact with any low voltage elements that may be switched on.
- + The platform must not be thrown or handled brutally when in use.
- + Always face the platform when climbing on or off it.
- + Make sure that you are wearing shoes that give you a firm footing.
- + Do not climb onto the platform if you suffer from vertigo or are tired.



- + Do not use Model 5 without putting the stabilizers in place
- + Do not use the 3 and 4-step models without installing the side-feet.

## 4. Maintenance:

+ Systematically check that the platform is in a good general condition before use (condition of parts and their geometry. Should parts need to be replaced only use TUBESCA-COMABI components, see constructor after-sales service instructions) <https://www.tubesca-comabi.com/fr/centre-de-documentation> heading after-sales exploded views

+ After use on a site, wipe the platform with a clean cloth.

+ The platform must be regularly checked, and results of the check must be recorded.