

# SHERPA 2272/173 to 2272/177 operating instructions **TUBESCA-COMABI**

Product compliant with December 2009 standards, i.e. NF P 93-353 for 3 to 6 step versions and NF P 93-352 for the 7 step version

3 (without stabilizers)	0.73	1.2	0.8	16.9	2.07x0.80x0.32	150	
4 (with stabilisers)	0.95	1.39	0.66	20.1	2.30x0.80x0.32		
5 (with stabilisers)	1.18	1.57	0.66	21.8	2.55x0.80x0.32		
6 (with stabilisers)	1.42	1.75	0.66	23.3	2.80x0.80x0.32		
7 (with stabilisers)	1.65	1.93	0.66	25.2	3.05x0.80x0.32		

## 1. Product description

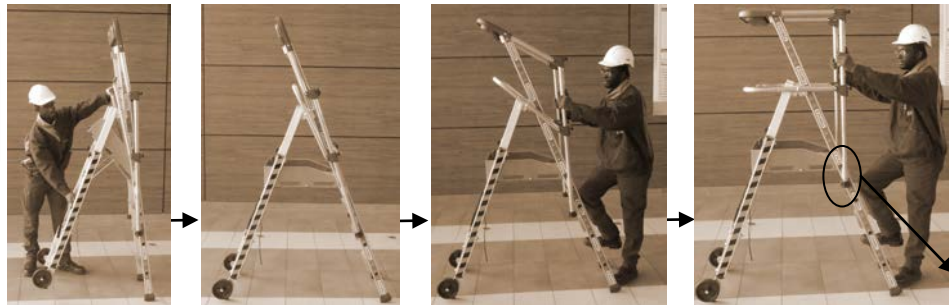
Lightweight Individual Mobile Platforms and Individual Mobile Platforms are designed for finishing and equipment fitting work. These platforms can be used by just one operator working on the ground.

They are fitted with two non-swivel rollers used for positioning and transporting them.

They are fitted with two independent adjustable stabilizers for the 3 to 7 step models. The stabilizers hold the unit perfectly securely under the normal operating conditions recommended by the standard.

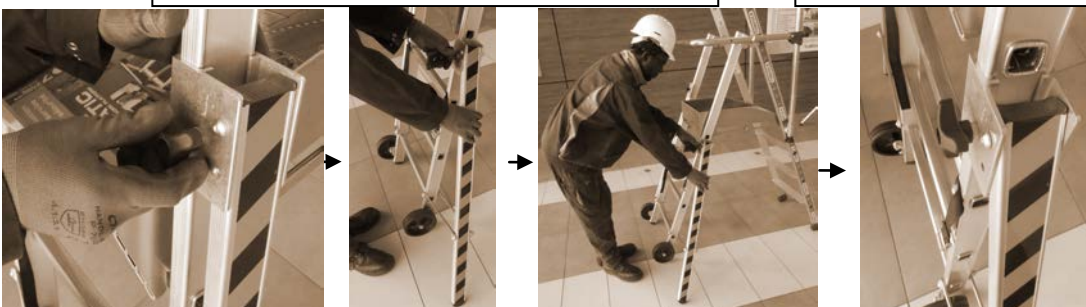
## 2. Use

### 2.1. Assembly



Open up the platform by lowering the floor. The platform must be against the climbing section, the section with the steps.

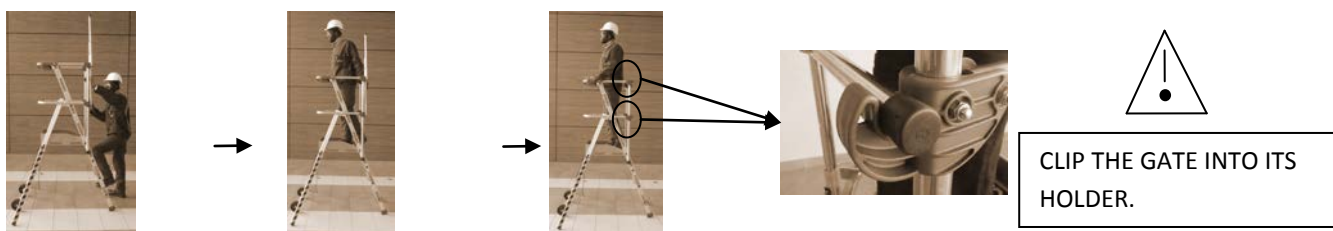
Unfold the guardrail. Once it is in position, the locking pins prevent the guardrail from folding up.



**LOCK THE CAM**

The stabilizer is put in place by unlocking the cam. It is in place once it makes contact with the floor. The cam must then be locked in position before the unit can be used.

## 2.2. Access



Open the gate to reach the work-floor. Once you are in position, the gate must be closed for working under correct conditions.

## 2.3. Moving



Moving when unfolded



Moving when folded

## 2.4 Work positions



## 2.5. Closing

Fold the unit up in reverse order to setting it up.

## 3. Recommendations for use:

- + Do not use the platform without its guardrails, nor behind any door that has not been locked.
- + The platform must only be used on horizontal, non-slip surfaces.
- + All the platform's feet must be in contact with the floor or ground.
- + On soft ground, a support plate must be placed under every foot.
- + Make sure that the work area is away from any bare conductor under load.
- + The platform must not be thrown or handled brutally when in use.
- + Always face the platform when climbing or coming down from it.
- + Make sure that you are wearing shoes that give you a firm footing.
- + Do not climb up the ladder if you suffer from vertigo or are tired.
- + Do not use the ladder without putting the stabilizers in place

## 4. Maintenance:

- + Systematically check that the platform is in a good general condition before use (condition of parts and their geometry. Should parts need to be replaced only use TUBESCA-COMABI components, see constructor after-sales service instructions)
- + After use on a site, wipe the ladder with a clean cloth.
- + The ladder must be regularly checked and results of the check must be recorded.